



GDB can communicate with you via:

- > eNewsletters/newsletters/email
- > Stakeholder Business Magazine
- > Face to face meetings

We can support your business by:

- > Promoting local success stories
- > New business launches
- > Assist with food and tourism event applications
- > Retail food and tourism promotions

We celebrate your business achievements through:

- > Chamber of Commerce Business Awards
- > Manufacturing Hall of Fame
- > Business Sustainability Awards

We can connect your business to:

- > Government departments and agencies
- > Research facilities
- > Industry associations and events
- > Property professionals
- > Local businesses and supply chains

Contact Details

ACR
 email: council@cgd.vic.gov.au
 or phone: 8571 1304

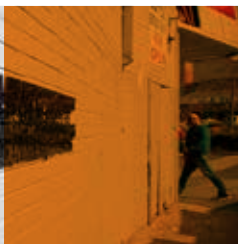
SEBN
 email: sebn@cgd.vic.gov.au
 or phone: 8571 1576

EDU
 email: business@cgd.vic.gov.au
 or phone: 8571 1550

 Phone 8571 1000	Find us online 
 Fax 8571 5196	greaterdandenong.com
 council@cgd.vic.gov.au	   
 TTY: 133 677 Speak and listen: 1300 555 727 Internet: www.iprelay.com.au	 TIS: 13 14 50



Greater Dandenong Business
Supporting
local businesses



Greater Dandenong Business (GDB) is dedicated to serving the needs of our business community and strengthening the economy of Greater Dandenong and Melbourne's South East.

We welcome your business enquiries and are very happy to meet with you and make appropriate introductions to assist, establish and grow your business.

GDB comprises of three teams: ACR (Activity Centres Revitalisation), SEBN (South East Business Networks), and the EDU (Economic Development Unit).

ACR leads and coordinates the revitalisation of the Dandenong, Springvale and Noble Park activity centres through the stewardship of property development, infrastructure, stakeholder engagement, place making and project management.

SEBN is an integral part of the City of Greater Dandenong's business support services, facilitating and delivering programs and networks specific to the south-east region's manufacturing sector and women in business. Their role is to 'build better business' and ensure a stronger, more resilient and globally engaged business community through engagement, education and connection.

The EDU markets the city as a business destination, facilitates business attraction, investment and employment creation, supports existing businesses and measures and monitors the local and regional economy to enhance the economic prosperity of the area.

GDB can help your business with:

- > Connections
- > Development
- > Promotions
- > Investment Attraction
- > Programs, Networks and Events
- > Linking Business and Community
- > Building Capability

The Activity Centres Revitalisation team specialises in:

- > Activity centre planning and strategy
- > Place making
- > Infrastructure planning and delivery
- > Strategic property development
- > Engagement and capacity building
- > Activity centre advocacy

SEBN specialises in:

- > Networks/common interest groups – export/globalisation
- > Workplace health and safety
- > Peer-based business development and collaboration
- > Manufacturing programs
- > Capability development and supply-chain links
- > CEO networks and mentoring
- > Leadership development
- > Education and employment – industry connection and projects
- > Women In Business network and activities
- > Industry breakfast events
- > Showcasing women in business events
- > Business and community connection events – Lunch with the Winners, 'Take a Swing for Charity Golf Day'

EDU specialises in:

- > Business mentoring
- > Small business grants
- > Social enterprise support
- > Commercial and social sector collaboration
- > Local buy procurement
- > Local economic data – economic profiles, manufacturing statistics/snapshots
- > Mayor and CEO forums
- > Real estate and developer forums
- > Food and cultural tours
- > Small business workshops and seminars
- > High Performance Food Consortium
- > Food Manufacturing Collaborative Network (FMCN)
- > Tourism
- > Regional Partnerships
- > Business Communications