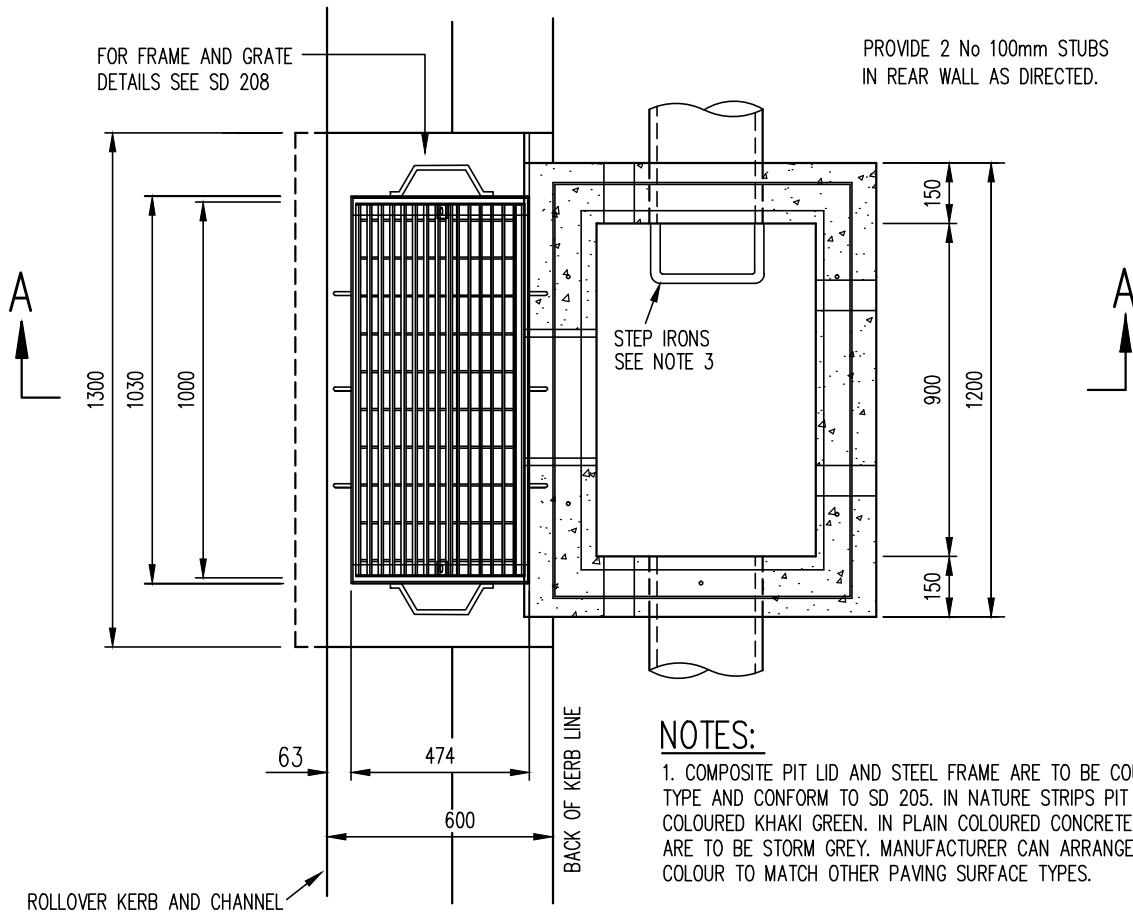


SECTION A-A



PLAN

NOTES:

1. COMPOSITE PIT LID AND STEEL FRAME ARE TO BE COUNCIL APPROVED TYPE AND CONFORM TO SD 205. IN NATURE STRIPS PIT LIDS ARE TO COLOURED KHAKI GREEN. IN PLAIN COLOURED CONCRETE PAVING PIT LIDS ARE TO BE STORM GREY. MANUFACTURER CAN ARRANGE SUITABLE CUSTOM COLOUR TO MATCH OTHER PAVING SURFACE TYPES.
2. ALL MEASUREMENTS ARE IN MILLIMETRES UNLESS OTHERWISE STATED.
3. STEP IRONS ARE TO BE PROVIDED IN ALL PITS OVER 900mm DEEP. (SEE SD 228) MAXIMUM DISTANCE FROM BOTTOM STEP IRON TO FLOOR OF PIT SHALL BE 500mm.



GREATER DANDENONG

GRATING PIT
 MAIN PIT CHAMBER BEHIND KERB
 TO SUIT ROLLOVER KERB AND CHANNEL

LAST UPDATED - SEPTEMBER 2014

INFRASTRUCTURE PLANNING

SD 206-A