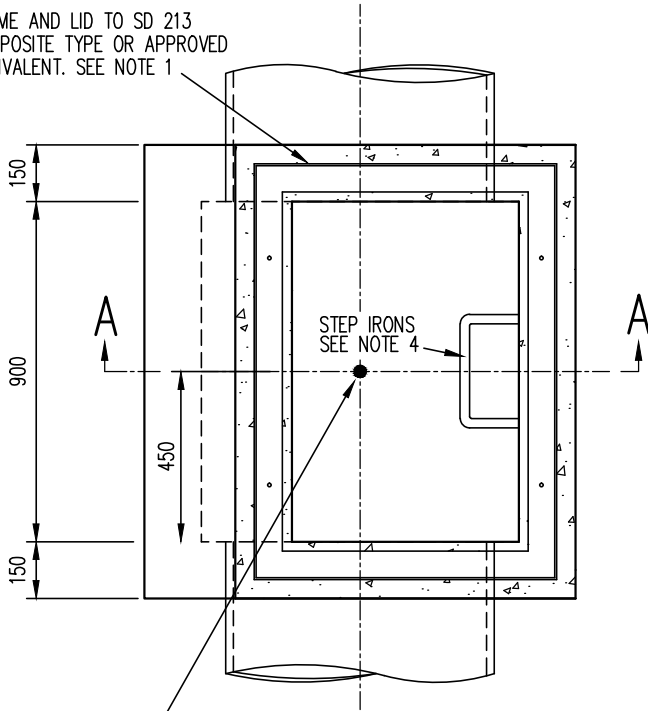


FRAME AND LID TO SD 213
COMPOSITE TYPE OR APPROVED
EQUIVALENT. SEE NOTE 1



PIT SETOUT POINT IS AT
CENTRE OF MAIN PIT CHAMBER

PLAN
SCALE 1:20

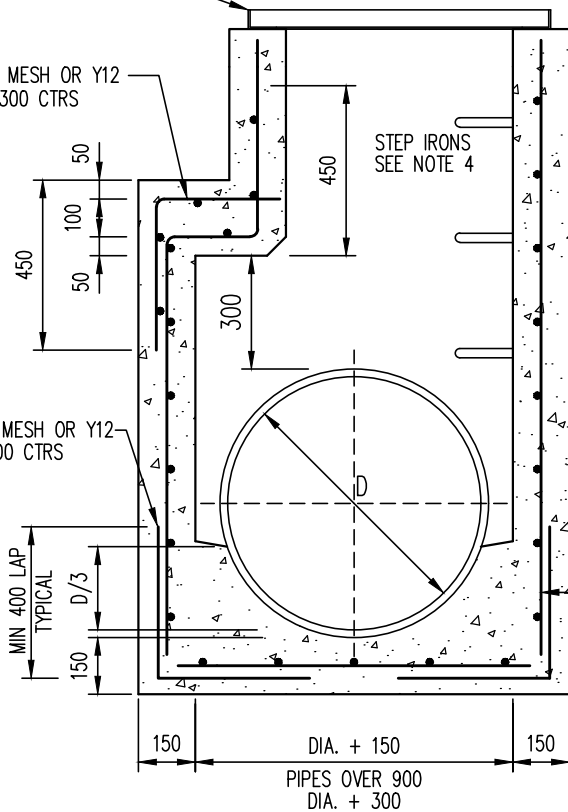
NOTES

1. FOR FRAME FIXING DETAILS SEE SD 213
2. COMPOSITE PIT LID AND STEEL FRAME ARE TO BE COUNCIL APPROVED TYPE AND CONFORM TO SD 205. IN NATURE STRIPS PIT LIDS ARE TO COLOURED KHAKI GREEN. IN PLAIN COLOURED CONCRETE PAVING PIT LIDS ARE TO BE STORM GREY. MANUFACTURER CAN ARRANGE SUITABLE CUSTOM COLOUR TO MATCH OTHER PAVING SURFACE TYPES.
3. ALL MEASUREMENTS ARE IN MILLIMETRES UNLESS OTHERWISE STATED.
4. STEP IRONS ARE TO BE PROVIDED IN ALL PITS OVER 900mm DEEP. (SEE SD 228)

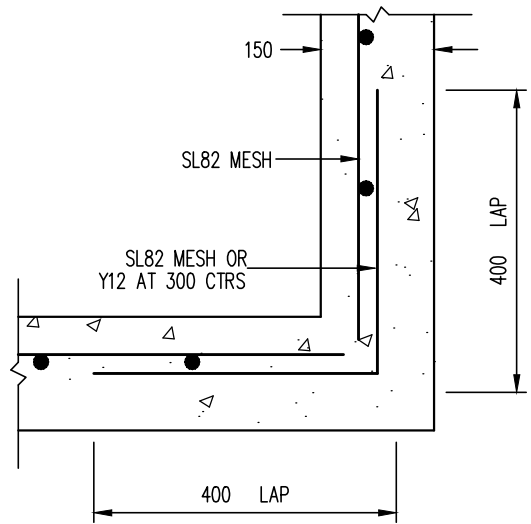
FRAME AND LID TO SD 213
COMPOSITE TYPE OR APPROVED
EQUIVALENT. SEE NOTE 1

SL82 MESH OR Y12
AT 300 CTRS

SL82 MESH OR Y12
AT 300 CTRS



SECTION A-A
SCALE 1:20



**PLAN OF
CORNER DETAIL**

SCALE 1:10

FOR PIT DEPTHS GREATER
THAN 2.0 METRES ALL WALLS
TO BE REINFORCED WITH
SL82 MESH PLACED CENTRALLY



GREATER DANDENONG

JUNCTION PIT
PIPE DIAMETER EXCEEDS 450mm

LAST UPDATED - MARCH 2015

INFRASTRUCTURE PLANNING

SD 210-B